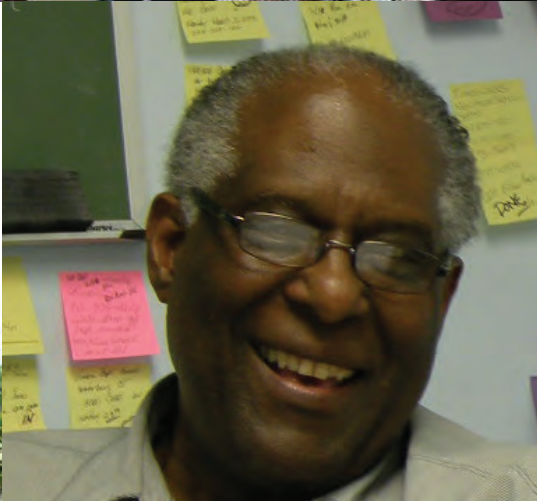
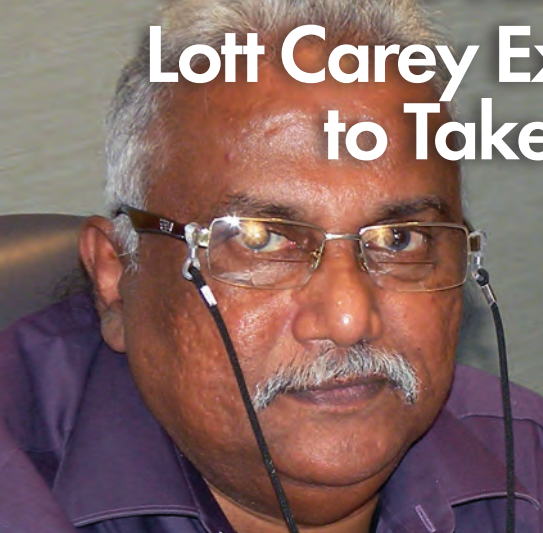




OUR VILLAGE IS CALLING... ... WILL YOU ANSWER?

Lott Carey Expands Membership Options
to Take on Expanded Missions



Your Lott Carey

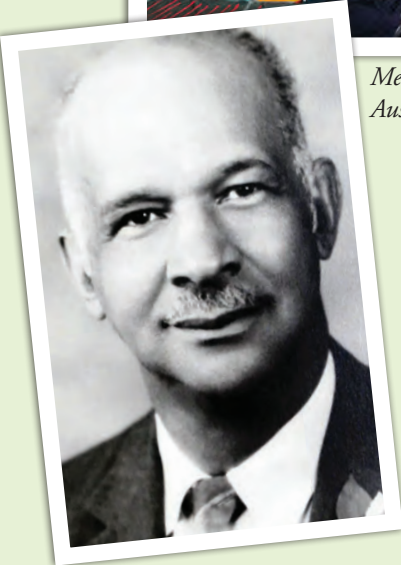
Service and Kinship Through the Years



Meeting with Lott Carey partners in Australia.



Thomas T. Roy--Superintendent, Lott Carey Baptist Mission in India--with wife, Dr. Mary Thomas.



Wendell Clay Somerville, who led Lott Carey for more than five decades and revolutionized global missions work.



A vintage shot of Lott Carey volunteers on mission.



Rev. Ngwedla Paul Msiza of South Africa, former President of the Baptist World Alliance (BWA), preaching at a local church in Virginia.

CONVENTION EXECUTIVE OFFICERS

President
Dr. Gina M. Stewart

First Vice President
Dr. Jesse T. Williams, Jr.

Second Vice President
Dr. James E. Victor, Jr.

Chairman, Board of Directors
Dr. John M. Alexander Jr.

Executive Secretary-
Treasurer
Rev. Emmett L. Dunn

WOMEN IN SERVICE EVERYWHERE EXECUTIVE OFFICERS

President
Dr. Angelita Clifton

First Vice President
Dr. Brenda McBorrough

Second Vice President
Mrs. Lynnette Richardson

MEN ON MISSIONS LEADERSHIP TEAM

Team Leader
Mr. Gregory Gabriel

Team Leader-Short-Term
Missions
Mr. Vernon Hammett

Team Leader-Special Projects
Mr. Charles Monterio

Team Leader-Recruitment
Mr. Jersey Joe Wilson

INTERNATIONAL YOUTH DEVELOPMENT LEADERSHIP

Team Leader
Rev. Brittney Mingo

Publisher & Editor
Rev. Emmett L. Dunn

Managing Editor
Mike Tucker

Design Director
Dash Parham

Copy Editors

Tonga Peterson
Rev. Eron Henry

Guest Editor

Dr. Angelita Clifton

Editorial Assistant

Christopher Tucker

Published by Lott Carey
8201 Corporate Drive, Suite 1245
Landover, MD 20785-2230
Phone: 301-429-3300

Current and back issues of the Lott
Carey Herald are available online at
LottCarey.org/Resources

Join a global ministry to heal the world through missions

'Your gifts, passion, creativity, and innovation add lasting value to our organization'



Dr. Stewart in Liberia: "As president, I strive to increase Lott Carey's visibility, amplify its message, engage its ecumenical footprint, and inspire future generations."

By Dr. Gina M. Stewart

Lott Carey enjoys a long and influential history in missions around the world. For 126 years, Lott Carey has been a trailblazer in the fight against hunger and HIV/AIDS, providing education and technical support, empowering women, building capacity, and extending the Christian witness to the far corners of the earth.

We follow Jesus' example by being an active, visible, tangible

expression of God's love.

As the oldest Black global missions agency based in the United States, Lott Carey has a proven track record of partnering with indigenous communities through prayer partnership, financial support, and technical assistance. Lott Carey works alongside indigenous communities engaged in ministries of evangelism, compassion, empowerment, and advocacy, coming alongside them to transform lives and make a difference.

Continued on page 18

New ways to connect with Lott Carey: What's in it for you

The call of Christ to 'love your neighbor' is taken seriously. The mission is transformative, intentional, inclusive, and incarnational

By Emmett L. Dunn
Executive Secretary-Treasurer

Lott Carey is built on the core values of a missional community. It is inclusive in its leadership and organizational structures, collaborating with like-minded faith communities irrespective of their church or denomination. It celebrates giftedness in all persons, regardless of age or gender.

We are incarnational because we believe that we are the face of Christ. We are successful financial managers because our leadership and staff are accountable, transparent, and have a track record of effective management.

Continued on page 18



Rev. Dunn conducts an office meeting at Lott Carey HQ in Landover, Maryland: "We are building upon an inspired past, present, and future. We want you with us. We need you with us. As long as people are in need, Lott Carey will remain relevant."



NEW MEMBERSHIP INITIATIVE

JOIN A COMMUNITY DEDICATED TO MAKING A DIFFERENCE

Be part of a movement that believes in faith and works



Lott Carey continues to expand its ministry and has launched a new membership program to bring individuals into the organization to grow its global ministry. The Lott Carey Individual Membership Program offers four categories based on members' interests and abilities:

- **Prayer Partners** commit to praying for the organization's ministry;
- **Faith Partners** commit to giving at least \$100 per month;
- **Covenant Partners** donate \$1,500 or more per year to help make an even greater impact; and
- **Ambassadors** give \$100 per year, recruit others, and plan fundraisers.
- **Youth Ambassadorships** are for teens 13-18 who make an annual contribution of \$25 or more.

"This is your chance to connect with missions directly—beyond what you've read in books or heard from others. Lott Carey provides missionary opportunities for those who want to model Christ—here and abroad," says Rev. Emmett L. Dunn, Executive Secretary-Treasurer of the organization. "Connect with us and fellowship with people committed to making a difference in the world; people who share your values and beliefs to help those in need while spreading the Good News."

Supporters will receive a lapel pin and a certificate to commemorate their membership. Covenant Partners receive a 50 percent registration fee discount for the organization's Annual Session, while Faith Partners receive a 25 percent discount ~~and Faith Partners receive a 15 percent discount.~~

But the benefits of membership go beyond discounts and certificates. By joining the Lott Carey community, individuals can make a real difference in the lives of others. They can support projects such as the organization's work to combat HIV/AIDS in Ethiopia or efforts to provide education and job training to women in India. They can help provide disaster relief in places like Haiti and Mississippi. And they can be part of a community that is committed to creating a better world for all, especially those lacking the voice, resources or social standing to speak for themselves.

Membership is just one way to get involved with Lott Carey. Individuals can also donate directly to the organization, sponsor a specific project, or volunteer time and skills on short-term expeditions. But by becoming a member, individuals can elevate their commitment to the next level, and become part of a community dedicated to making a difference.

"We will always appreciate the prayers and contributions of our church members," says Dunn. "Individuals simply offer a way for women and men to bring personal expression to their mission work."



In Haiti (opposite page), Lynn Joseph, founder and CEO of Mission of Grace, shares a warm hug with Madame Felicia following Bible study in Carries. In Kenya (left), a small village celebrates water gushing from a new well.



In Guyana traveling the Pomeroun River are GMBC Superintendent Brenda Harewood (center) and Pastor Erwin and Sister Alverna Lewis.

FROM ADDICT TO PASTOR

THE INSPIRING STORY OF ERWIN LEWIS

'I wanted to learn more about this God who had changed my life'

Erwin Lewis, now a 55-year-old pastor with the Guyana Missionary Baptist Church (GMBC), has come a long way from his days of addiction. He is a married man with six children and serves the Abrams Creek Baptist Church in the Pomeroun River. But his journey to this point was not an easy one.

Erwin's life took a drastic turn when he accepted Jesus Christ as his Lord and Savior. He was delivered from smoking and witnessed his daughter's healing from a deadly illness. He joined his local church and enrolled in bible college to learn more about his Deliverer.

"I wanted to learn more about this God who had changed my life," Erwin says. "I wanted to know how I could serve Him better and share His love with others."

Erwin's dedication and passion for God did not go unnoticed by his church community. He was eventually ordained as a deacon and eventually answered his calling to the ministry. With the support of his pastor and the GMBC leadership, he earned a bachelor's degree in biblical studies from the Wesleyan Bible College.

Erwin's transformation did not end there.

His household was out of control. He had no idea how to fix the various domestic issues that were overwhelming him and seeping back into the church community. But with the help of the GMBC family and the guidance of God's Holy Spirit, his life and family were transformed.

"I give God all the glory and praise for giving me the victory," Erwin says. "I am grateful to the GMBC family for surrounding us with unconditional love."

Erwin's dedication and commitment to God did not go unnoticed by the GMBC leadership. He was commissioned as a probationary pastor to serve the Abrams Creek Baptist Church. This assignment has been quite a challenge, but Erwin is grateful for the opportunity to serve as one of GMBC's pastoral leaders.

"Erwin is a true inspiration to us all," says Rev. Brenda Harewood, GMBC Superintendent. "His dedication and commitment to God are evident in everything he does. We are proud to have him as part of our GMBC family."

Says Erwin: "I am grateful for the second chance that God has given me. I am grateful for my family and the GMBC family who never gave up on me."



HEALTH CENTER SAVING LIVES

Nestled in the small community of Long Creek, Guyana, the A. Carlyle Miller Cottage Hospital and Health Center stands as a beacon of hope for the people. Established in 1977 by Dr. Allen Carlyle Miller, the health center has been providing critical medical services to the people of Guyana, particularly those living in rural and remote areas who have limited access to healthcare services.

The health center is a part of the Guyana Missionary Baptist Church-Lott Carey organization and has expanded its services over the years to include primary healthcare, maternal and child health services, and emergency medical services.

A significant impact of the facility was its contribution to the fight against the COVID-19 pandemic, distributing food hampers to families with food insecurities since the pandemic began. The center expanded this project under a recent grant from Lott Carey. The health center provided COVID-19 testing and treatment services to the people of Guyana, helping to curb the spread of the virus.

Despite the health center's significant impact on healthcare in Guyana, there are several significant challenges facing the institution and other healthcare institutions in the country—the lack of adequate funding for healthcare services; the disruption of primary care services and financial hardships caused by COVID-19; and reaching rural and remote areas with essential care and services.



GMBC Superintendent Brenda Harewood (center) at the Abrams Creek Church with Pastor Erwin Lewis (left) and his wife, Alverna.



Pastor Erwin checks in with youngsters during campus ministry at school dorm.



In Haiti, Lott Carey partnership help ensure the future of children through food, health, and education programs.

LOTT CAREY MAKING A DIFFERENCE IN HAITI

H

aiti has had more than its share of natural disasters, political instability, hunger, and malnutrition. The need is particularly acute among children from impoverished families. But Lott Carey is changing the situation with a feeding program that provides daily meals to more than 500 students. Funding from individuals and organizations means our organization can serve nutritious meals that include rice, beans, vegetables, and proteins. The impact is significant. For many children the daily meal they receive at school is their only nutrition. Thanks to Lott Carey the program is addressing immediate food needs and improving the health and overall well-being of the students. And there is another benefit—regular, nutritious meals is helping to break the cycle of poverty because well-nourished students are better able to focus on their studies and achieve academic success, which can improve opportunities for future generations. Lott Carey also provides scholarships to help students attend school and supports initiatives to improve access to healthcare.





Lott Carey's commitment means nutritious meals is helping to break the cycle of poverty because well-nourished students are better able to focus on their studies and achieve academic success.

BEING THE CHANGE WE WANT TO SEE

'The impact of Lott Carey in our community is evident and impressive'

U

nion Stratégique des Eglises Baptistes d'Haïti-Lott Carey (MUSEBH), organized a three-day spiritual event for its churches and 120 leaders. The results? Participants were motivated, churches grew, and divine healings occurred during and after the retreat.

Monthly financial support from Lott Carey enables MUSEBH to purchase sound equipment for services, organize a Children's Christmas event and host conferences that facilitate church-to-church partnerships. At a recent MUSEBH-sponsored wedding conference, nine couples were married.

Education is a key component for the security and well-being of the country, especially in the face of challenging economics and the threat of civil war. MUSEBH has founded schools to teach children the Bible, the vision of the organization's founder, the Rev Lott Carey, and daily devotions.

Lott Carey's influence on Haïti is unquestioned, especially in the schools it supports. For example, eight previously unemployed teachers now work at the Institution Chrétienne Lott Carey in Fond-des-Nègres, allowing them to also improve their living conditions. Also, 88 children attend the school free, and more than 60 families benefit from Lott Carey support.

Similarly, the Union Baptist School Miragoane and the Collège Aigle d'or received financial support from Lott Carey, allowing MUSEBH to finance the education of 110 children from impoverished families.

The Siloe Christian School in Sault du Baril has 118 children who go to school for free, thanks to Lott Carey, and the community greatly benefits from Lott Carey's support.

Says Rev. Marc Arthur St. Cyr, president of MUSEBH: "Without Lott Carey our mission would not be noticeable and impacting. The lives of many people are transformed. The impact of Lott Carey in our community is evident and impressive."





In India, students at Lott Carey-supported schools learn with computers and hands-on exercises.

LOTT CAREY TARGETS EDUCATION AND HEALTH TO HELP INDIA'S 1.4 BILLION PEOPLE

F

or more than 50 years, Lott Carey Mission in India has been providing healthcare services and education to India's economically marginalized communities. Despite financial limitations, the mission continues to make a profound impact on the lives of thousands.

Health: The HIV/AIDS Awareness Project aims to control the spread of the disease in the community. Though a mini hospital with seven beds for HIV/AIDS patients was closed due to an increase in patients, the mission continues to spread awareness through magic shows and street plays conducted every week.

The mission also administers several leprosy clinics, the first established in 1970 in Karnal, Haryana. Today, there are seven clinics providing much-needed healthcare services to leprosy patients across different regions. And the mission's mobile clinics have been a lifeline for nearly 7,000 patients who cannot afford to travel to government-run hospitals.

Education: The mission's commitment to education is also noteworthy. Through its Non-Formal Education Projects, some of the poorest citizens are provided value-oriented free education, community services lauded by people in all sectors of society.



Somerville School, Greater Noida, is a private school affiliated with the Central Board of Secondary Education (CBSE) in India. Established in 1998 by Lott Carey, the school aims to provide a holistic approach to education through academic study and co-curricular activities.

The building is equipped with a rainwater harvesting system and is earthquake resistant. It is one of the three sister schools located in the National Capital Region, including Somerville School (Vasundhara Enclave), Somerville International School (Sector-132 Noida), and Somerville School (Noida).

The Somerville School believes in keeping abreast with modern education and sports state-of-the-art equipment for students. Every classroom is equipped with smart boards for access to digital learning. It has fully equipped science, mathematics, and computer labs

for junior and senior levels. There are also two well-stocked libraries for junior and senior levels. There is a basketball court, football field, cricket ground, volleyball court, and a play station.

The institution owns a fleet of buses with trained drivers and conductors. Free education is provided to economically-challenged students. A highly efficient and qualified faculty has ensured 100 percent result in the board examinations over the years. Various activities are held throughout the year to hone their potential.

Somerville School hosts ~~to~~ Expressions, an interschool carnival held every November, when the best of the schools from around the National Capital Region participate to prove their mettle English, music, painting, and elocution. The competition is another platform for students to showcase their talents.



Despite some financial limitations, the schools maintain a high level of achievement and impact thousands with educational and health programs.



COFFEE KEEPS PROGRESS MOVING ALONG IN KENYA AND SOUTH SUDAN



Lott Carey Baptist Ministries in Kenya and South Sudan are focused on conflict resolution, including tribal wars and ethnic discrimination. The ministry has sent pastors to volatile areas to discourage destructive acts. Education is another area of emphasis. It has used proceeds from the coffee plantation to pay school fees for orphans and secondary school-age children. The ministry has also participated in fundraising activities to help university students achieve their dreams.

The coffee plantation also contributes to economic development, using proceeds to pay for medical bills to support the needy. It has sponsored social, educational, and communal events that promote peaceful coexistence. Coffee profits also sustained a sister ministry in South

Sudan, benefiting pastors, laymen, and members.

Plans include increasing the size of the coffee plantation to 20 acres, which will allow its charity to expand. A 20-acre plantation would yield about 16,000 kilos (about 35,000 pounds), enough to strength-



Kenya flag

en church, family, community, and constituent work in South Sudan.

The ministry has also undertaken special projects, such as the Kipsitet Baptist Clinic, which offers medical services to the surrounding areas. The continuous support of partners in the USA have helped replenish the clinic's medicine supply.



South Sudan flag

Kipsitet Empowerment Center, which has provided training in tailoring and hairdressing for nearly 50 women in the last two years, is among the most successful initiatives: 24 women and young mothers have graduated with certificates. The center also offers basic computer training.






In Kenya, clergy celebrate the arrival new motorcycles that will help them reach remote regions. From left: Revs. John Rotich, Hezron K. Cheruiyot, Patric Lang'at and Moses Mutai.

T

hey were not born to be wild but Revs. John Rotich and Patrick Langat are feeling quite blessed by two motorcycles recently acquired by Lott Carey Baptist Ministries-Kenya. Now the clergymen will find it easier to navigate remote areas to visit the sick and elderly and attend to the spiritual needs of congregants. The motorcycles will also enhance community engagement, allowing the preachers to participate in community events, partner with other organizations, and establish relationships with community leaders. “We cannot express enough gratitude for your steadfast prayers and continuous support, which have been instrumental in making these acquisitions possible,” says Andrew Cheruiyot of Lott Carey Baptist Ministries – Kenya. “It is through the love and generosity of family like Lott Carey that our ministry thrives and makes a tangible difference in the lives of others.”



Rev. Cheruiyot, Superintendent of Lott Carey Baptist Ministries in Kericho, with his wife, Florence. Together, they manage multiple churches, a medical clinic and centers for widows, abused women and orphans.



In Liberia, Kimberline A.C. Annan is enjoying the blessing (and hard work) of being Vice Principal of Student Affairs at the Lott Carey Mission School.

KIMBERLINE A.C. ANNAN

A MODEL OF SUCCESS FOR OTHER STUDENTS TO FOLLOW

T

he Lott Carey Baptist Mission School in Liberia is known for academic excellence and character development; a place that nurtures students and equips them to become leaders who make positive contributions to their communities. One recent example is Kimberline A.C. Annan, who recently returned to her alma mater as the Vice Principal of Student Affairs.

Ms. Annan's journey started when she was not only a student but an active member of the school community who participated in various activities and programs. She held leadership positions, including "Ms. LCM," and an excellent reputation grounded in built an excellent reputation grounded in academic fineness and exemplary integrity.

"My experience at Lott Carey Baptist Mission School was life changing," says Ms. Annan. "I was exposed to a diverse group of students and teachers who taught me the importance of character, hard work, and leadership. The school gave me the foundation I needed to pursue further studies and become a leader."

After graduating in 2013, Ms. Annan stayed connected with the school, participating in alumni events and supporting the school's initiatives. She also earned a

master's degree from Near East University in Nicosia, Turkey, which offers undergraduate and postgraduate studies to 26,000 students from 100 countries.

Ms. Annan was appointed Vice Principal for Student Affairs at Lott Carey Baptist Mission

School in 2022, working on refining and implementing education and development policies. Her colleagues say she has brought dynamism and a fresh perspective to the school.

And as if to underscore her considerable accomplishments, the Monrovia city government named her the inaugural recipient of the George M. Weah Honor of Nationalism, an award named for the nation's president that recognizes Liberians committed to public service through education, national, and social development.

She says she is thriving because of her school family, in particular Rev. Emile D. E. Sam-Peal, Superintendent/Principal, "who has not only afforded me the chance to give back to my alma mater but also shown a great deal of support for my academic pursuits and the employment of women."

Ms. Annan is quite optimistic about the future.

"I am excited about the opportunity to impact the next generation of leaders. I understand the challenges that students face and am committed to providing them with the support and guidance they need to succeed," she says. "Good character, industriousness, and scholarship opened opportunities for me."



Kimberline celebrates winning a a public service award with her grandmother, Agnes N. Elliott (left), and her mother, Alice M. Trunneh.





LOTT CAREY MISSION SCHOOL EXPANDS ATTENDANCE FOR ALL GIRLS ON THEIR PERIODS



'My pad gives comfort and makes the month great'

M

enstruation is a natural event in the life of girls and women, but for those living in poverty it is a reason to miss school, work, and public gatherings to avoid embarrassment. In addition to facing cultural taboos, many females can't afford sanitary products and reportedly use newspapers, tissues, and rags. These substitutes create hygiene and psychological challenges. But positive changes are occurring.

The Lott Carey Mission School in Liberia has been in the forefront on this issue, providing free sanitary supplies to its students for the past 12 years, reportedly the only school in the country that consistently gives free, high-quality sanitary supplies to female students. This largess has reduced infections and school absences while, building confidence in the girls.

LCMS has even created a dedicated PINK menstrual hygiene

room in its clinic, which includes a bathroom with clean towel and new undergarments—an affirming statement to the girls about comfort, safety, and privacy. Here are excerpts from students about the supplies and facility:

- **Pheobe E. Nagbe:** "I am so thankful to the administration for considering and making available to us girls at Lott Carey the Pink Room, where we girls can have a safe space where we can relax and not feel embarrassed or worry about someone looking at us weirdly or judging us. I am extremely grateful."
- **Jackie L. Barclay:** "My pad gives comfort and makes the month great; my pad is my defense. I am infection-free. Comfort remains a goal every month with the distribution of hygienic and quality sanitary pads. I am free to play and stay in school."
- **Yvette Fayiah:** "It means I'm unique and have values. Quality pads, quality ladies. Good menstrual hygiene, good experience. There is no need to be ashamed of my period because it is a gift God has given me. The pad distribution encourages me to share my experience."

New ways to connect

Continued from page 3

Congregations, institutions, and individuals should count it gain when joining Lott Carey because any partnership with Lott Carey ensures that young boys and girls will be educated, churches will be planted, the voiceless will have an advocate, the hungry will be fed, and needs will be met. Lott Carey also offers development training to youth and young adults, exposing them to domestic and global mission opportunities, and provides opportunities to serve in leadership.

The future of Lott Carey will be determined by how we embrace all age groups. We don't believe that our young people are simply the future but an integral part of the organization right now. We are committed to creating relevant space for them to thrive as well as influence the direction of how we engage the world. They are our partners and will be mentored as they climb the leadership ladder.

Lott Carey seeks to expand its footprint in the United States and across the globe. That means investing in the development of the younger generation by calling them to a missional lifestyle, increasing support to all mission partners, increasing the membership base, and establishing a sound financial future.

Our track record suggests these goals are achievable.

God has nurtured an excellent relationship with Lott Carey Board of Directors, allowing me to restructure office operations in the face of COVID-19; ensured uninterrupted support to partners during difficult financial challenges brought on by the pandemic; significantly reduced financial obligations to lending institutions; built



Rev. Dunn, who has traveled the globe, understands that missions work is often a sweaty pursuit. The Lott Carey chief executive was in his native Liberia on a recent excursion.

staff capacity; increased membership; improved technology; managed several successful virtual events, including two Annual Sessions and two Spring Mission Conferences; and launched the “I Am Lott Carey” membership drive. And I was blessed to lead a team of leaders and friends of Lott Carey to Liberia to celebrate the 200th anniversary of Rev. Lott Carey's arrival in 1822.

We are building upon an inspired past, present, and future. We want you with us. We need you with us. As long as people are in need, Lott Carey will remain relevant. But we must embrace changing dynamics relevant to global missional engagement while remaining prayerful as we seek direction from God.

Together, we can do more. I am calling on all missional minded people to be fully engage in supporting the ministry and mission of Lott Carey so we may remain a transformative community, touching lives with transforming love.



In addition to her duties as President of Lott Carey, Dr. Stewart pastors a thriving congregation in Memphis, Tennessee.

Join a global ministry

Continued from page 3

Anyone with a commitment to missional theology and practice among indigenous communities is invited to partner with us.

Churches that support Lott Carey have access to numerous enrichment programs for pastors and congregations, including Thriving in Ministry, Thriving Congregations, the Pastoral Excellence Network, Leading the Lott Carey Way, and the Lott Carey Annual Session. Lott Carey International Youth Development (IYD)

helps churches nurture new generations of leaders through youth seminars, the annual convention, and short-term mission trips.

We continue to solicit your participation and leverage your agency in the work of missions. Your gifts, passion, creativity, and innovation

add lasting value to our organization, and help to amplify our efforts, strengthen our capacity, and honor the vision of Lott Carey.

As president, I strive to increase Lott Carey's visibility, amplify its message, engage its ecumenical footprint, and inspire future generations. People need to know who Lott Carey the missionary was and what we are doing to make a better world.

Your commitment, support and generosity make a transformative and qualitative difference in the lives of our missional partners. You are a catalyst for global impact and change, optimizing mutual respect for our international partners, maximizing, and prioritizing resources and pursuing a common purpose that is vital for caring for God's world.

—Dr. Gina M. Stewart, President of Lott Carey and Senior Pastor of Christ Missionary Baptist Church in Memphis, Tennessee

LOTT CAREY PROJECTS AID LOCAL ECONOMIES

Lott Carey-Nigeria has made a meaningful impact on different communities through educational institutions, empowerment programs, community outreach, and evangelistic outreach programs.

An early effort was the sponsorship of 70 students for six years at the Lott Carey secondary school in Afaha Eno. This was followed by the sponsorship of more than 150 students at the school in Ikot Efre Itak. The goal was to assist parents who could not afford quality education for their children, regardless of ethnicity or religious affiliation.

In 2018, Lott Carey-Nigeria, with the assistance of Women in Service Everywhere (WISE), financed an existing short-term, revolving micro loan scheme for the women in the mission. This program has had a significant impact on the lives of women, giving them better purchasing power to improve existing trading and farming.

One of the most impactful projects Lott Carey has undertaken in recent years is in Orida, Mbaise, located in the middle belt of Cross River State, is a farming community consisting mainly of migrant farmers from neighboring states of Akwa Ibom and Imo State. The forest land was cleared for farming, and these lands are leased out annually by the owners to farmers. Some of these migrant farmers are Lott Carey members in their villages and decided to invite the Calabar congregation to start a church in this area. This was done, and the area did not have a nursery/primary school for the migrant farmers' children. The school has been operating for the past nine years.

A request was made by the school officials for a water well for the immediate community that had no source of clean drinking water. During the rainy season, catchment holes were dug for running water to drain into. However, during the dry season the community had to walk more than a mile and a half to the closest stream of water that runs through the forest.

Rev. Emmett Dunn, Lott Carey Executive Secretary-Treasurer, approved a grant for a fresh water well for the school, drilled at the entrance of the school to ensure accessibility by the community. The project took almost a month—twice the normal time because of the granite in the ground.



Fresh water and education are bringing renewal to the community and its children.

PILGRIMAGE TO WEST AFRICA PAST, PROMISING FUTURE



AFRICA REVEALS A SACRED GROUNDS FOR MISSIONS WORK



In the heart of Monrovia, Liberia, Providence Baptist Church stands as a testament to the country's rich history. Founded in 1822 by the Rev. Lott Carey, the church is the oldest Baptist church in Liberia and the second oldest on the African continent. It was here that a team of African American settlers, freed from slavery in the United States, established the first republic on the continent of Africa two centuries ago.

Rev. Emmett L. Dunn, Executive Secretary-Treasurer of Lott Carey, led a team of Lott Carey leaders on a pilgrimage to Liberia and Ghana. For many, the journey was a chance to connect with their ancestral roots and to honor the legacy of Lott Carey and his pioneering missionary team.

The pilgrimage began in Liberia, where the team explored Providence Island, the site where Carey and his team first landed in 1822. As they walked in the footsteps of their forebears, the team felt a sense of connection to the history of Liberia and to the legacy of African American missionaries who had come before them.

From Liberia, the team traveled nearly 1,000 miles east along the coast of Ghana to the Assin Manso Slave River and the Cape Coast dungeon. Known as the "Door of No Return," the dungeon was the last stop for many enslaved Africans before they were shipped off to the New World. For the Lott Carey pilgrims, it was a portal to their past, a chance to honor their ancestors and to reconnect with a history that had been whitewashed in American culture and the church universal.

Before walking to the Slave River, where their ancestors had received their first bath after being captured and their last bath before being carted off to the Americas, the team held a ceremony of remembrance of those who were enslaved. In that moment, they felt a sense of connection to their African ancestors and a sense of liberation from the "double consciousness" that W.E.B. DuBois had described as the sense of dislocation that African Americans feel from Africa and from themselves.

The pilgrimage ended on the shores of Ghana, where the team saluted their ancestors and honored their legacy. In the Twi language of Ghana, Sankofa is a word meaning go back and get it. For the Lott Carey pilgrims, the journey was a chance to go back and get in touch with their past, to honor the legacy of Lott Carey and his team, and to reconnect with the land of their ancestors. It was a journey that left them feeling blessed beyond measure and fully engaged in the work of Jesus.



Liberia flag



Ghana flag

—By Dr. Angelita Clifton, President, Lott Carey WISE (Women In Service Everywhere) originally published by the Religion News Service in December 2022

TEACHING, TRAINING, ACROSS GENERATIONS



rinity Evangelical Ministry (TEM) in Jamaica has been making a significant impact on the lives of young adults and children by providing practical skills training and early childhood education. But during the COVID-19 pandemic, the Skills Training Centre, which offers face-to-face courses in practical skills, found it difficult to offer its courses—Commercial Food Preparation, and Food and Beverage Restaurant Hosting. Nonetheless, 66 young adults were trained and an additional course, Allied Health, was planned.

TEM ensures that the courses offered are relevant and responsive to the current needs of persons seeking employment, especially in the tourism sector, Jamaica's leading industry and the economic engine of the Caribbean nation. The organization has been impacting generations of families by providing nurturing and early formation of young children and a second chance to young adults who need a skill to become employable and care for themselves and their families.

Lott Carey has partnered with TEM to provide resources and support. The generosity of individuals, churches, and friends of Lott Carey has made a significant impact on its ability to provide practical skills training and early childhood education in Jamaica. The impact made

by the sharing of resources is immeasurable, and TEM is grateful for the partnership, which includes 40 computers donated by Lott Carey.



Lott Carey partnerships mean resources and other support, including early childhood education. Here, the kids are bubbling with enthusiasm as they greet Lott Carey Executive Secretary-Treasurer Emmett L. Dunn.







8201 Corporate Drive
 Suite 1245
 Landover, MD 20785-2230
 LottCarey.org



Lott Carey

SERVICE AND KINSHIP THROUGH THE YEARS

**THRIVING
 CONGREGATIONS
 INITIATIVE ENERGIZES
 CHURCH LEADERSHIP**

A

As Christian congregations face unprecedented economic and social challenges, churches are struggling to stay relevant, to stay connected to younger generations, and to maintain a sense of community. One port in the storm is Lott Carey’s Thriving Congregations Initiative, funded by the Lilly Endowment.

The plan is to help U.S. congregations prosper by strengthening ministries that help people deepen their relationship with God, enhance their connections with each other, and contribute to their communities—locally and globally.

It will facilitate four cohorts consisting of 8-to-12 pastors and lay leaders who will be mentored by Lott Carey to better recognize changing social and cultural contexts, clarify values and mission, and cultivate Christian practices that can strengthen their vitality, faithfulness, and effectiveness.

The initiative recognizes that each congregation is unique and has its own set of challenges and opportunities; the goal is to develop a customized plan for each to experience growth. The focus areas are:

- **Spiritual vitality** will help congregations deepen their relationship with God through prayer, worship, and spiritual practices.
- **Relational connectedness** will help congregations build strong relationships with each other through small groups, mentoring, and other forms of community.
- **Missional engagement** will help congregations find ways to make a positive impact on their communities and the world through outreach, service, and advocacy.

Congregations interested in the Thriving Congregations Initiative should contact the Lott Carey office at 301-429-3300.



Lilly Endowment Inc.
 A private foundation since 1937

